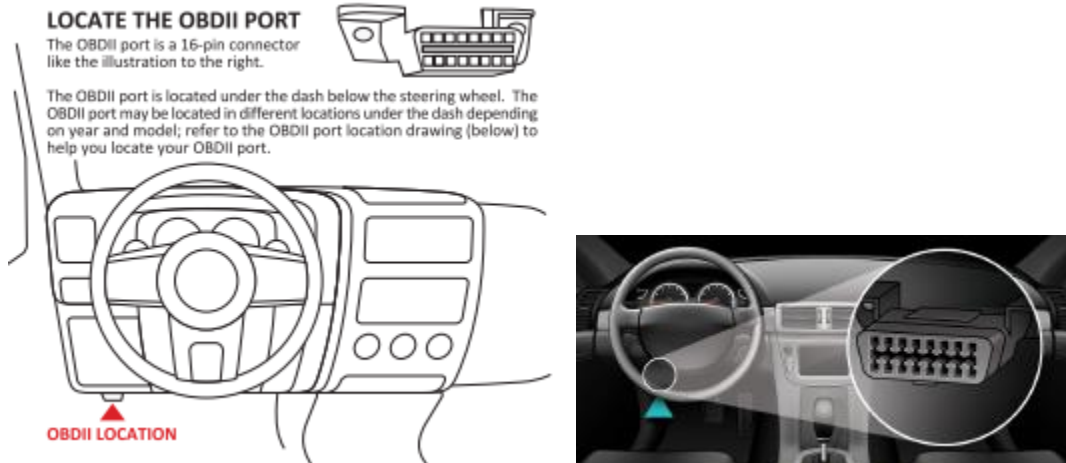




## Quick Start Guide

### GETTING STARTED:

- Download the PredatorX app from the Play or App store.
- Make sure Bluetooth is enabled on your phone. Be sure any preferences/sharing/location is enabled as well
- Connect the device to the OBDII port of your vehicle and turn the ignition to the run position or engage run mode on vehicles with a push button start



- Open the app. “Allow” PredatorX to find, connect to, and determine nearby devices
- Navigate through the feature screens for details, select “Continue”, then select “Create an Account” and enter your information
- Verify your VIN
- Navigate to “My Garage”> select “Vehicle Tunes”> select the desired tune level. The app should prompt you to download custom files for your vehicle. Once finished, select the desired tune level that best reflects your fuel octane grade and select install.
- After selecting “Install”, you’ll be able to make adjustments to any tuning options/parameters available for your vehicle. Then, select “Build Tune”
- The device will connect to the server to build the tune. Select “Upload to Vehicle” and confirm when prompted. You should notice the solid-state blue light change to an orange flashing light and the app will display “Writing ECU” along with a green progress circle

### LED Breakdown:

- **Fuschia (solid)**: Updating Wi-Fi/BLE chip
- **Green (solid)**: USB in use
- **Yellow (flashing)**: PredatorX device’s OS is updating
- **Blue (flashing)**: BLE is discoverable
- **Blue (solid)**: BLE is connected
- **Red (flashing)**: Error
- **Orange (flashing)**: Programming ECU or TCU



- Once complete, you may start and enjoy driving your vehicle.
- For operating instructions or trouble shooting, please refer to the PredatorX tab on our website at [www.diablosport.com](http://www.diablosport.com) . For any additional questions, please contact:

Phone: 561-908-0040 M-F 8AM-5PM EST

Email: Tech@DiabloSport.com